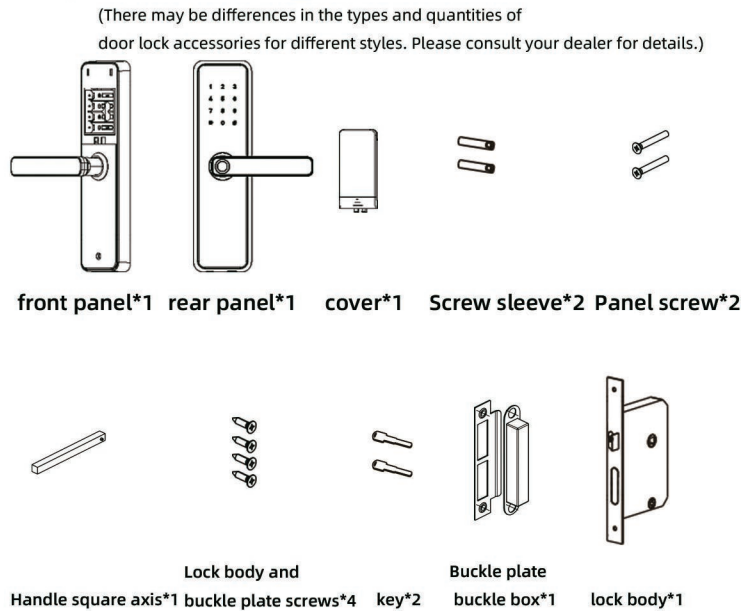


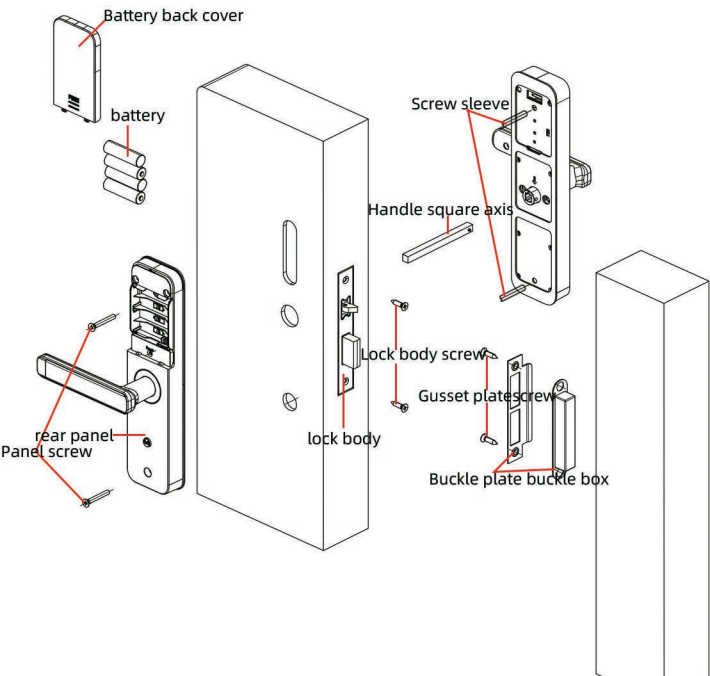
Indoor door intelligent lock

Installation manual

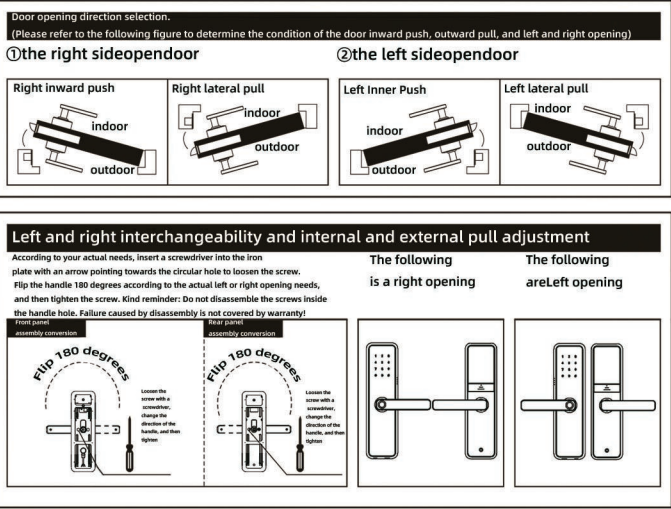
I 、Check if the accessories are complete, including door lock accessories



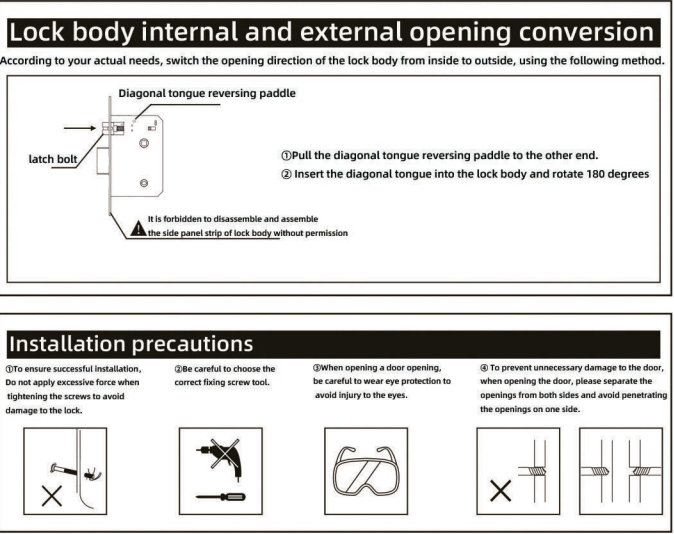
II 、Installation Overview



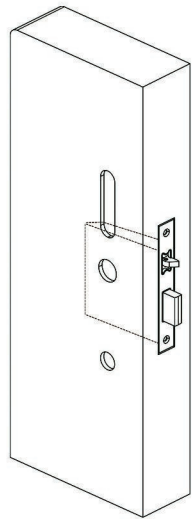
III 、Precautions before installation (1)



III 、Precautions before installation (2)

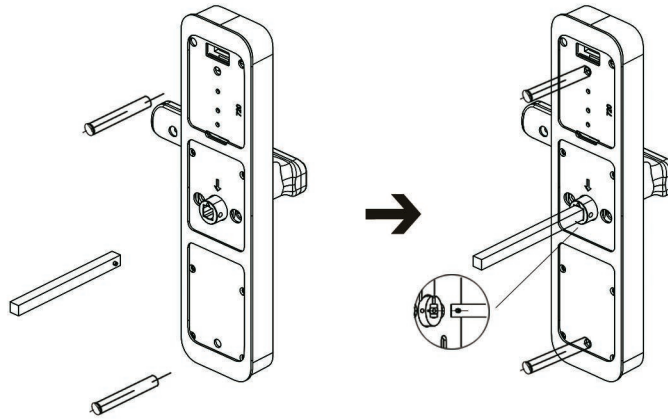


IV 、 Detailed installation steps (1)



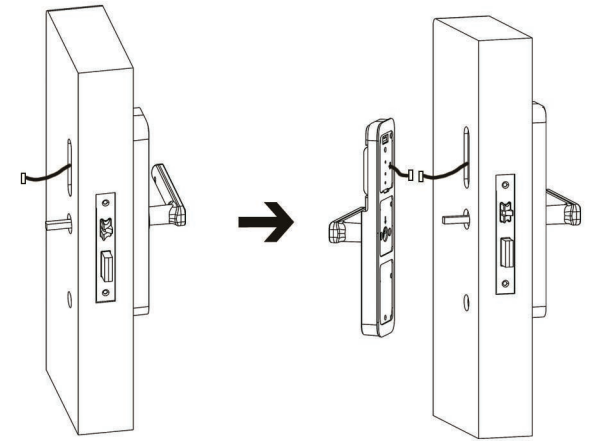
Place the lock body into the door slot of the opened hole and secure it with two lock body screws

IV 、 Detailed installation steps (2)



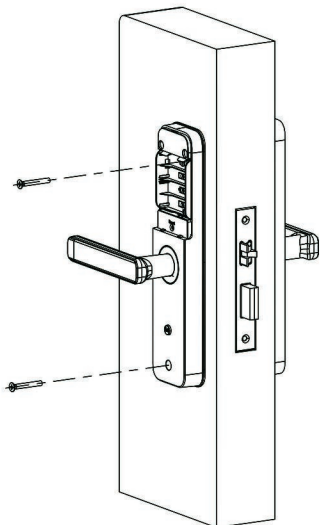
Take the front panel, fix the handle shaft to the lock, align it with the latch to stabilize it, It is not easy to fall off. And fix the screw sleeve onto the upper and lower screw posts.

IV 、 Detailed installation steps (3)



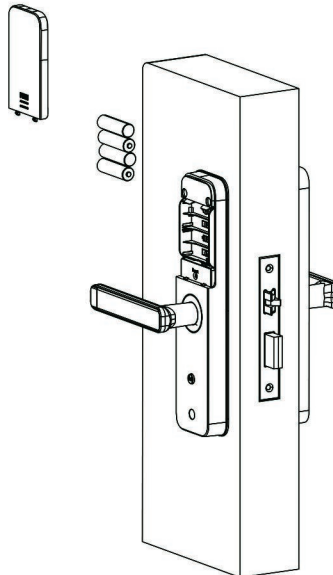
Align the square axis on the front panel with the lock hole and thread it through, and also thread the wire head and screw sleeve through the door hole.

IV 、 Detailed installation steps (4)



Remove the rear panel, insert it into the handle shaft, align it with the screw hole on the panel, open the battery cover, and secure the last two panel screws

IV 、 Detailed installation steps (5)



Insert the battery and cover it with the battery cover. After installation, enter the initial password to verify unlocking, and use the mechanical key to unlock for

Please note that please keep your keys safe and do not place mechanical keys indoors for emergency use when opening the door!